

## LIQUID LEVEL GAUGES



### SAFEGUARD SERIES LEVEL GAUGE

(SHIELDED TUBULAR LIQUID LEVEL GAUGE, U.S. Patent Number 4693117)

#### APPLICATION:

The Safeguard liquid level gauge replaces unprotected tubular glass that is mounted between tubular gauge glass valves. The packing nut on the tubular valve tightens around the metal nozzles of the Safeguard gauge, not glass! Nozzles match the O.D. of 5/8" glass or 3/4" glass. Gauge is suitable for low to medium pressure applications to 500 psig.

#### SAFETY:

Sight tube is totally enclosed on three sides by a metal frame and on the front with a Polycarbonate shield.

#### ONE PIECE ASSEMBLY:

One continuous gauge provides total visibility of the liquid level of a tank. Maximum length is 25 feet. No stacking of gauges is needed.

#### ECONOMICAL:

One Liquid Level Gauge per tank with a set of Kenco tubular valves gives the full view of the liquid level in the tank.

#### EASY TO INSTALL:

Insert the 5/8" or 3/4" metal nozzles into the existing valves. The stuffing box seals around the metal nozzle, not the glass.

#### VOLUME AND HEIGHT SHIELDS:

The Polycarbonate shield can be supplied with various scales indicating height, calibration rate, or tank volume. Refer to page 12 to see the assortment of standard shield options.

### EPG SERIES LEVEL GAUGE

(ENVIRONMENTAL PROTECTION GAUGE, U.S. Patent Number 5442959)

#### APPLICATION:

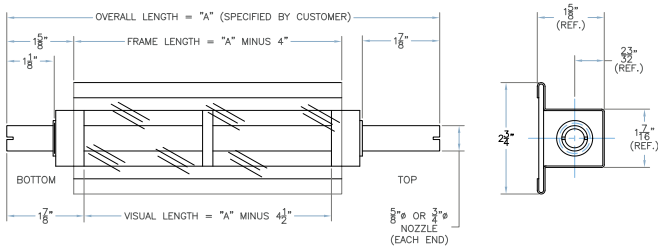
The Kenco Environmental Protection Gauge protects the glass with a 360° UV stabilized polycarbonate tube. This gauge is ideal for an outdoor environment where the gauge is exposed to the elements (i.e. hail, wind, etc.). The gauge is priced to be an economic alternative to a tubular gauge glass shrouded by expanded metal. The EPG will operate in low to medium pressure applications to 500 psig.

#### FEATURES:

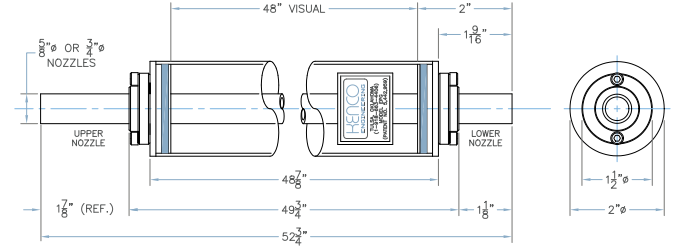
- Replaces unprotected tubular gauge glass.
- 360° visibility of fluid level.
- Red-line glass is standard for easy viewing of fluid level.
- The tubular valve packing nut tightens around 316 S.S. nozzles, not glass!
- Outer tube is high impact UV stabilized polycarbonate tubing.
- 316 S.S. nozzles available in a 5/8" O.D. or 3/4" O.D.
- Maximum overall length is 52 3/4". For longer lengths, use Safeguard Level Gauge.
- Easy to install - Insert the 5/8" O.D. or 3/4" O.D. nozzles into the valves.
- Ideal for use with Kenco Tubular Valves (KTV).



## SAFEGUARD SERIES LEVEL GAUGE



## EPG SERIES LEVEL GAUGE



## ORDERING SYSTEM

REQUESTED BY: \_\_\_\_\_ COMPANY: \_\_\_\_\_  
 ADDRESS: \_\_\_\_\_ CITY: \_\_\_\_\_ STATE: \_\_\_\_\_ ZIP: \_\_\_\_\_  
 PHONE: \_\_\_\_\_ FAX: \_\_\_\_\_ EMAIL: \_\_\_\_\_

## SAFEGUARD SERIES LEVEL GAUGE

<input type="text"/>	<input type="text"/>	<input type="text"/>	<input type="text"/>
<b>Gauge Style</b> 62=5/8" O.D. Tubular Connection 75=3/4" O.D. Tubular Connection	<b>Center to Center Dimension (inches)</b>	<b>Material of Construction</b> PC= PVC Wetted Parts w/ Carbon Steel Frame PS= PVC Wetted Parts w/ Stainless Steel Frame C=Zinc Plated Carbon Steel A=Stainless Steel W=316 Stainless Steel Wetted Parts w/ Carbon Steel Frame	<b>Seal Material</b> V=Fluorocarbon A=Aflas B=Buna-N T=PTFE E=Ethylene Propylene
<input type="text"/>	<input type="text"/>	<input type="text"/>	<input type="text"/>
<b>Shield Options</b> L=Clear Polycarbonate H=Height Scale RH=Rate Height Scale MH=Metric Height Scale MRH=Metric Rate Height Scale M=Expanded Metal Guard	<b>Sight Tube Options**</b> GS=5/8" O.D. Glass (STANDARD) RL=5/8" O.D. Redline Glass	<b>Maximum Working Pressure (PSIG)</b>	<b>Maximum Operating Temperature (°F)</b>
<input type="text"/>	<input type="text"/>	<input type="text"/>	<input type="text"/>
<b>Steam</b> S=Steam Application NS=Non-Steam Application	<b>Valve Manufacturer</b> KENCO Other (Please Specify)	<b>Valve Manufacturers Part #</b> KTV Other (Please Specify)	To Be Determined By KENCO

## EPG SERIES LEVEL GAUGE

<input type="text"/>	<input type="text"/>	<input type="text"/>	<input type="text"/>	<input type="text"/>
<b>Gauge Style</b> EPG-5/8=5/8" O.D. Tubular Connection EPG-3/4=3/4" O.D. Tubular Connection	<b>Center to Center Dimension (inches)</b>	<b>Seal Material</b> V=Fluorocarbon A=Aflas B=Buna-N T=PTFE E=Ethylene Propylene	<b>Sight Tube Options</b> RL=5/8" O.D. Redline Glass	<b>Maximum Working Pressure (PSIG)</b>
<input type="text"/>	<input type="text"/>	<input type="text"/>	<input type="text"/>	<input type="text"/>
<b>Maximum Operating Temperature (°F)</b>	<b>Steam</b> S=Steam Application NS=Non-Steam Application	<b>Valve Manufacturer</b> KENCO Other (Please Specify)	<b>Valve Manufacturers Part #</b> KTV Other (Please Specify)	To Be Determined By KENCO

\*\* Based on application data provided, Kenco will select the appropriate sight tube material, i.e. high pressure glass.